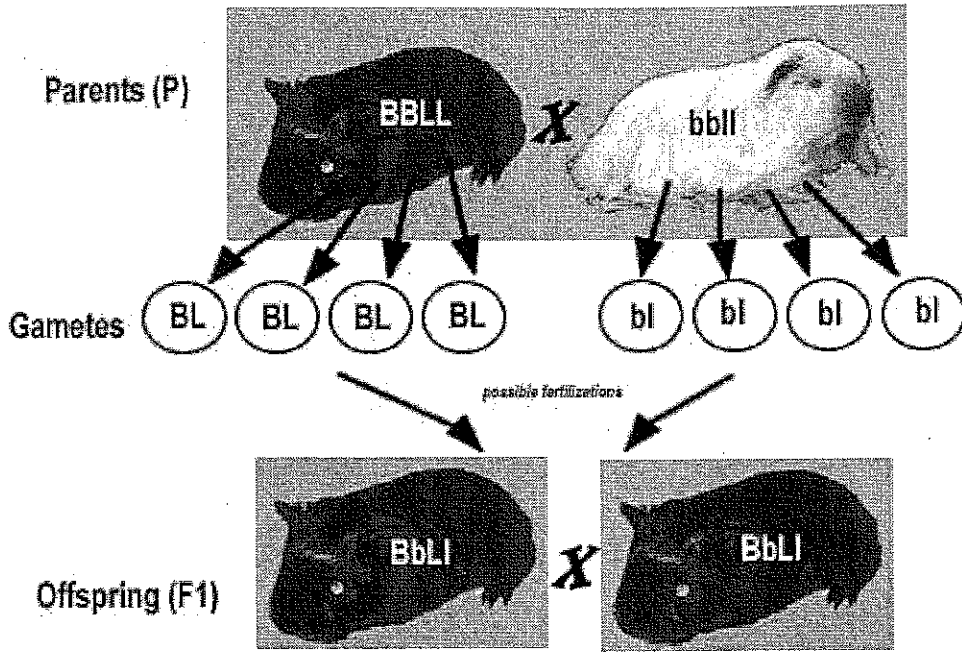


# DIHYBRID CROSS

Name \_\_\_\_\_



A cross (or mating) between two organisms where two genes are studied is called a DIHYBRID cross.

The genes are located on separate chromosomes, so the traits themselves are unrelated.

BB = black  
Bb = black  
bb = white

LL = short hair  
Ll = short hair  
ll = long hair

		Female Gametes			
		BL	Bl	bL	bl
Male Gametes	BL	BBLL			
	Bl				
	bL				
	bl				

Fill out the genotypes of each of the offspring to determine how many of each type of offspring are produced.

Phenotypic ratios - How many, out of 16 are:



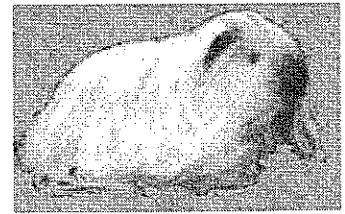
Black, Short



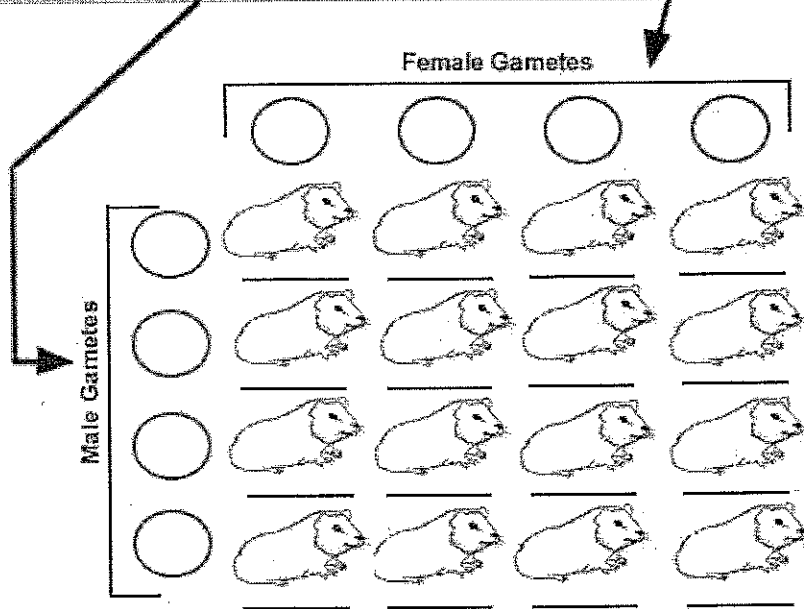
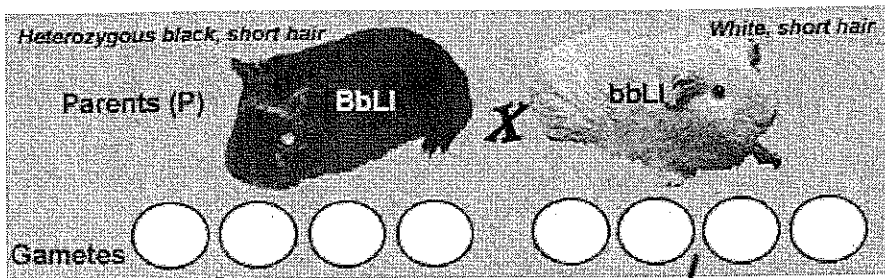
Black, Long



White, Short



White, Long



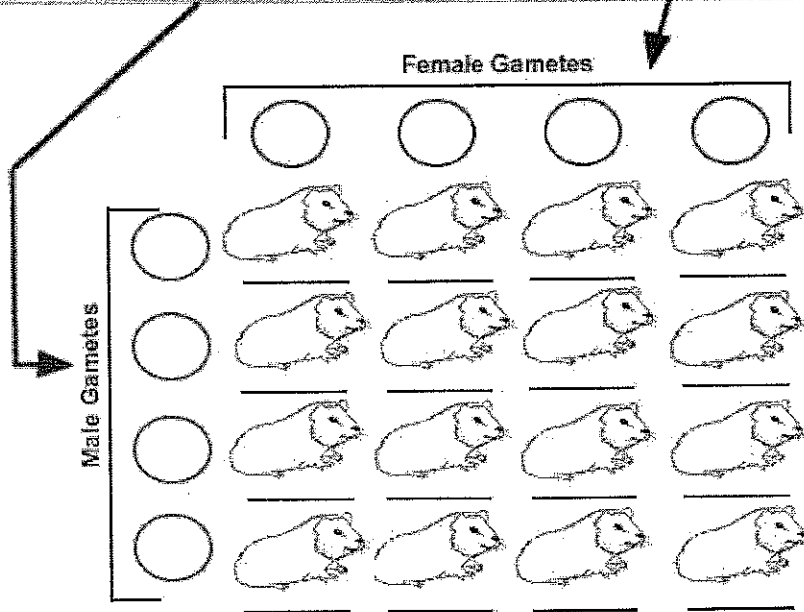
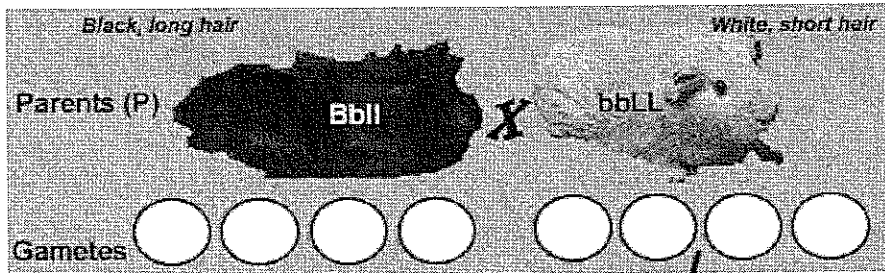
How many of the offspring are:

Black, Short \_\_\_\_\_

Black, Long \_\_\_\_\_

White, Short \_\_\_\_\_

White, Long \_\_\_\_\_



How many of the offspring are:

Black, Short \_\_\_\_\_

Black, Long \_\_\_\_\_

White, Short \_\_\_\_\_

White, Long \_\_\_\_\_